



PRODUCT CATALOGUE

2021



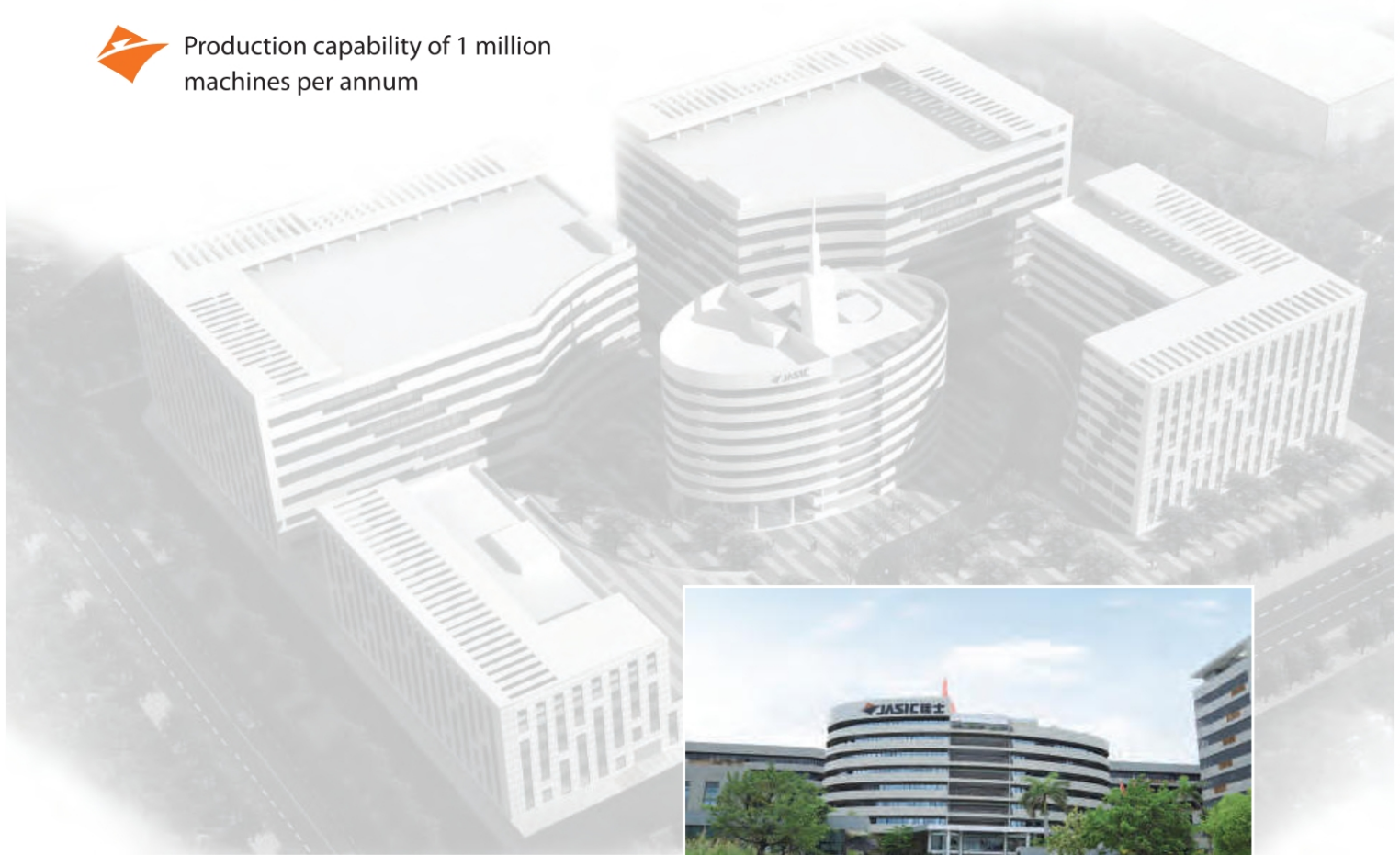
5 million dollar investment into cutting edge integrated Test Laboratories on site
Jasic equipment undergoes 42 individual tests to meet high quality standards

Manufacturing over 200 different equipment models on site

Production capability of 1 million machines per annum

4 centre strong Research and Development Facilities have been ranked as the most progressive R & D enterprise in the Pearl River Delta Region

In 2017, Jasic were awarded the first welding laboratory UA certification in China from TÜV Rheinland



Jasic Technology Co. Ltd

QUALITY “ JASIC inverters comply with the most stringent quality and safety standards ”

Every inverter is comprehensively inspected with 42 test procedures in R & D testing laboratories on site



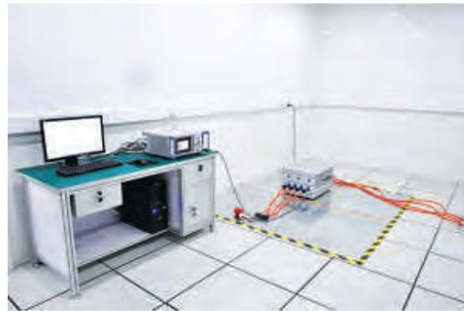
Vibration Testing



Waterproof Testing



High/Low Temperature



Conducted Emission Disturbance Testing



Electrostatic Prevention Testing



Metallic Dust Testing



Harmonics & Flicker Test Laboratory



“ JASIC has invested 5 million dollars into cutting edge integrated test laboratories and owns 4 Research & Development Centres in China with more than 60 patents. JASIC'S 30,000m² Research & Development Centre has the most complete and advanced test laboratory to guarantee JASIC product quality and commitment to new technology. ”

All products endure 42 different tests of equipment: EMC tests, environmental and reliability testing, safety tests, functional performance tests, white box limit tests, thermal tests, auto-testing platform, component/device test, welding processing test, arc ignition/cutting experiments, welding material metallographic examination tests, high speed photography test in welding process along with all the in-depth testing within each test area.

MANUFACTURING

JASIC'S manufacturing site is over 80,000m² and is arguably the largest and most modern inverter manufacturing base in China. The production capacity is 1 million units per year. JASIC'S Welding Engineering Centre offers several brand new advanced auto production lines, supporting auto chip mounter, auto insertion machine and comprehensive debugging cabinet to achieve highly advanced manufacturing production. The manufacturing site is equipped with 13 auto welder assembly lines with self-recovery tooling plate function, 2000m² SMT & AI workshop (temperature, humidity and dust control, relative clean workshop), 10,000m² PCBA workshop (Epoxy self-levelling floor anti-static production workshop).



“ Over 795,000 models manufactured to date in 2016 ”

Q: How do I register?

A: It's so simple . . . visit our website www.jasic.co.uk and head to the register tab on the home page

Q: Can I have my machine validated as I am working to EN50504:2008 and I need to provide certification?

A: Yes, we offer a full validation service and we recommend you book for this at the time of purchase. For a small fee you will have peace of mind that your machine complies with welding procedure requirements.



Q: We employ a team of 40 welders, can you provide training on our new JASIC products?

A: Yes, we can offer full on-site professional training on all equipment from our dedicated team or if you prefer, why not visit our JASIC Training Academy in Manchester - where our trainers can take you through the practical and theory aspects of your weld.



Q: Sometimes things go wrong - we have a large order to fulfil and think we may have a problem with the kit, what should we do?

A: Firstly, we ask you to call our dedicated technical support line on 0161 728 7901 as our over the phone advice may be all you need to get you up and running. If not, we employ the best solutions to get you back up and running. Through our highly trained technician support team in Manchester, Swindon and Cramlington customer care is our byword and your productivity is our priority.

Q: Can we return the equipment? Who covers the cost of this?

A: Yes, Wilkinson Star will arrange at its expense to collect and return equipment from the distributor (UK Mainland).which is under warranty.

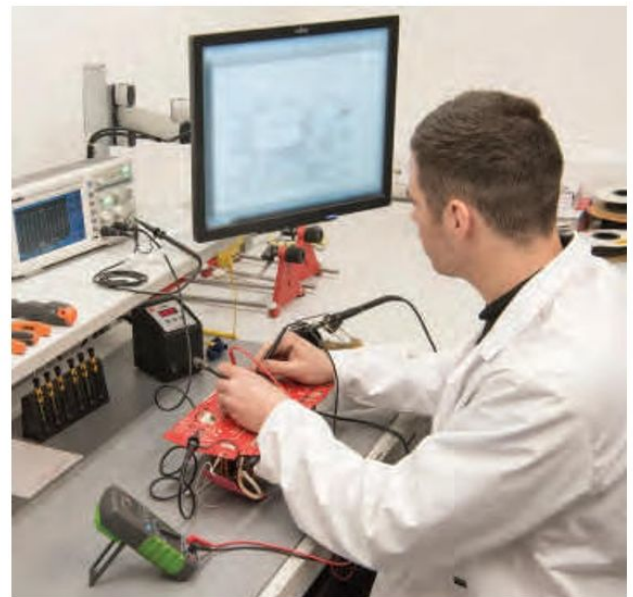
Q: So purchasing this product sounds like it will give me total peace of mind in that it's been through rigorous quality testing in manufacture. You've sold thousands of units and in the event of a problem you can fix it swiftly and efficiently. Sounds like a good investment.

A: Absolutely, we sell quality and our investment in pre and after sales service is paramount to us in the future growth of the product. We know you will be pleased with your purchase and enjoy many years of quality welding with JASIC.

“ We are serious about product quality. Sound performance and reliability is what you can expect from our products ”

Q: So this is a true 5 year warranty?

A: Totally, we believe we are the only company in our industry who can offer a true 5 year warranty as no one can match us on the investment we've made to support the sale and service of this quality equipment.



Serving Industry



Manufacturing



Power Generation



Rail



Shipbuilding



Engineering / Maintenance



Steelwork



Agricultural



Construction



Aviation



Offshore



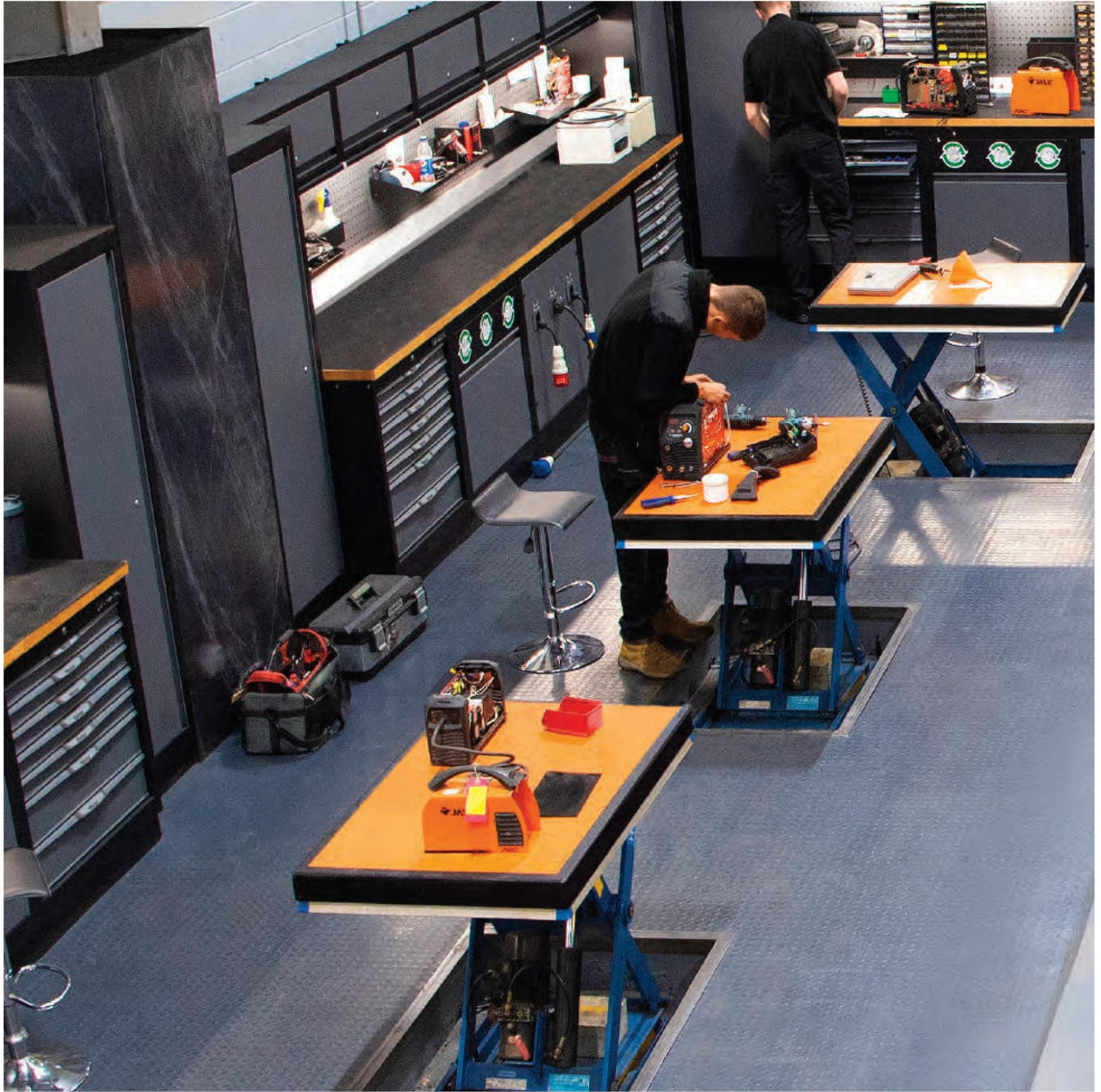
Engineering / Maintenance



Mining



- 12 individual acoustic welding bays fitted with the latest fume extraction equipment
- Extensive range of welding equipment on site for practical training covering all welding processes



ARC 18 - 33

MMA	JA-140	Arc 140	20 - 21
	JA-160PFC	Arc 160 PFC Wide Voltage	22 - 23
	JPA-160PFC	Power Arc 160 PFC Wide Voltage c/w Case and Lead Set	24 - 25
	JA-180PFC	Arc 180 PFC Wide Voltage c/w Lead set	26 - 27
	JPA-180	Power Arc 180 SE c/w Case and Lead Set	28 - 29
	JA-200PFC	Arc 200 PFC Wide Voltage c/w Lead set	30 - 31
	JA-402C	Arc 400 c/w Cellulosic Function	32 - 33

TIG 34 - 65

TIG	JT-180	TIG 180 DC	36 - 37
	JT-180DV	TIG 180 DC Dual Voltage	38 - 39
	JPT-180	TIG 180 DC SE c/w Case and Lead Set	40 - 41
	JT-200	TIG 200 DC	42 - 43
	JT-200P-PFC	TIG 200P DC Pulse PFC Wide Voltage	44 - 45
	JT-300P	TIG 300P DC Pulse	46 - 47
	JT-300P-WC	TIG 300P DC Pulse Water Cooled	48 - 49
	JT-400PA	TIG 400P DC Pulse	50 - 51
	JT-400P	TIG 400P DC Pulse Water Cooled	52 - 53
	JT-200DS	TIG 200P AC/DC Pulse Mini Digital	54 - 55
PLASMA	JT-202A	TIG 200P AC/DC Pulse Analog NEW	56 - 57
	JT-202D	TIG 200P AC/DC Pulse Digital NEW	58 - 59
	JT-315MWD	TIG 315P AC/DC Pulse Multi Wave Digital	60 - 61
	JT-315MWD-WC	TIG 315P AC/DC Pulse Multi Wave Digital Water Cooled	62 - 63
	JT-500D	TIG 500P AC/DC Pulse Digital	64 - 65

MMA

TIG

PLASMA

MIG

ACCESSORIES

CONTENTS

PLASMA 66 - 77

JP-45PWV	Plasma Cut 45 PFC Wide Voltage	68 - 69
JP-61	Plasma Cut 60	70 - 71
JP-81	Plasma Cut 80	72 - 73
JP-100	Plasma Cut 100	74 - 75
JP-160	Plasma Cut 160	76 - 77

MIG 79 - 107

JM-160C	MIG 160 Multi Process	80 - 81
JM-200C	MIG 200 Multi Process	82 - 83
JM-200CS	MIG 200 Synergic Multi Process	84 - 85
JM-200PFC	MIG 200 Multi Process Inverter PFC Wide Voltage	86 - 87
JM-202C	MIG 202 Inverter Compact	88 - 89
JM-252C	MIG 250 Inverter Compact	90 - 91
JM-250P	MIG 250 Pulse Inverter Compact NEW	92 - 93
JM-352C	MIG 350 Inverter Compact	94 - 95
JM-272S	MIG 270 Multi Process Separate	96 - 97
JM-352S	MIG 350 Multi Process Separate	98 - 99
JM-352S-WC	MIG 350 Multi Process Separate Water Cooled	98 - 99
JM-452S	MIG 450 Multi Process Separate	100 - 101
JM-452S-WC	MIG 450 Multi Process Separate Water Cooled	100 - 101
JM-350P	MIG 350P Multi Process Separate Water Cooled Pulse	102 - 103
JM-500P	MIG 500P Multi Process Separate Water Cooled Pulse NEW	104 - 105
JM-500SYN	MIG 500 Multi Process Separate Water Cooled Synergic NEW	106 - 107

ACCESSORIES 108 - 109

MMA

TIG

PLASMA

MIG

ACCESSORIES



ACCESSORIES

MIG

PLASMA

TIG

MMA

MMA



MMA

TIG

PLASMA

MIG

ACCESSORIES



MMA

TIG

PLASMA

MIG

ACCESSORIES



The Jasic Arc 140 MMA welding inverter is equipped with the latest IGBT technology and a singular PCB for improved efficiency and maintenance.

This technologically advanced inverter is extremely user-friendly and offers reliable and consistent arc performance. The Arc 140 also offers lift TIG functionality making it an ideal choice for maintenance and light fabrication.

High quality tactile rubber finish to mouldings & handle

Durable, compact inverter with distinctive design



Supplied in full colour packaging



ORDER CODE
JA-140

KEY FEATURES

- Professional quality IGBT inverter
- Anti-stick, Arc-force, Lift TIG
- Hot start for those difficult to strike electrodes
- 40Khz inverter frequency, high efficiency
- Compact size, lightweight and modern design
- Heavy duty 16-25mm dinse sockets
- Easy arc starting, minimal spatter
- Auto-compensation for voltage fluctuation
- High quality tactile rubber finish to mouldings and handle
- Supplied in full colour packaging
- Can weld electrodes of up to 3.2mm
- AVR generator friendly

TECHNICAL DATA

Input Voltage	AC 230V - 50/60 Hz
I _{eff} (A)	15.5
Input Power (kVA)	6
Current Range (A)	10 - 140
Duty Cycle @ 40°C	140A @ 35%
No-Load Voltage (V)	63
Efficiency (%)	85
Power Factor	0.7
Protection/Insulation Class	IP21S/F
Dimensions (LxWxH mm)	313 x 130 x 250
Weight (Kg)	4.7

OPTIONAL

MMA Leads
WCS25-3



Shoulder Strap
JSS-01



Site Bag
JSB-01





MMA

TIG

PLASMA

MIG

ACCESSORIES



The Jasic Arc 160 PFC model uses PFC technology to provide advantages such as energy saving and a wide input voltage range.

This technologically advanced inverter is extremely user-friendly and offers reliable and consistent arc performance.

The Arc 160 PFC also offers lift TIG functionality making it an ideal choice for maintenance and light fabrication.

High quality tactile rubber finish to mouldings & handle

Highly flexible dual voltage inverter for site work applications



Supplied in full colour packaging

PRO SERIES ARC 160 PFC Wide Voltage



ORDER CODE
JA-160PFC

KEY FEATURES

- IGBT inverter technology
- Wide input voltage 95-265V
- Anti-stick, Arc-force, Hot start, Lift TIG
- 33Khz inverter frequency, high-efficiency
- Compact size, lightweight and modern design
- Heavy duty 35-50mm dinse sockets
- Easy arc starting, minimal spatter
- Auto-compensation for voltage fluctuation
- High quality tactile rubber finish to mouldings and handle
- Supplied in full colour packaging
- Can weld electrodes of up to 4mm
- AVR generator friendly

TECHNICAL DATA

Input Voltage	95-265V - AC 50/60Hz	
	115V	230V
I _{eff} (A)	17.5	11.6
Input Power (kVA)	3.7	5
Current Range (A)	10 - 125	10 - 160
Duty Cycle @ 40°C	125A @ 35%	160A @ 35%
No-Load Voltage (V)	68	
Efficiency (%)	85	
Power Factor	0.99	
Protection/Insulation Class	IP21/F	
Dimensions (LxWxH mm)	365 x 135 x 280	
Weight (Kg)	6.4	

OPTIONAL

MMA Leads
WCS25-3WEL



Shoulder Strap
JSS-01



Site Bag
JSB-01





COMPLETE WITH

Protective case & MMA lead set

MMA

The Jasic Power Arc 160 PFC wide voltage welding inverter is equipped with the latest IGBT technology and a singular PCB for improved efficiency and maintenance.

TIG

This technologically advanced inverter offers PFC technology providing energy saving benefits for the user. The Arc 160 PFC also offers lift TIG functionality making it an ideal choice for maintenance and light fabrication.

PLASMA

Includes Case and Lead Set

MIG

Durable, compact inverter with distinctive design

ACCESSORIES

High quality tactile rubber finish to mouldings & handle



POWER SERIES ARC 160 PFC Wide Voltage



ORDER CODE
JPA-160PFC

KEY FEATURES

- IGBT inverter technology for the professional user
- Wide input voltage 95-265V
- PFC energy saving technology
- Anti-stick, Arc-force, Hot start, Lift TIG
- 40Khz inverter frequency, high-efficiency
- Compact size, lightweight and modern design
- Heavy duty 35-50mm dinse sockets
- Easy arc starting, minimal spatter
- Auto-compensation for voltage fluctuation
- High quality tactile rubber finish to mouldings and handle
- Includes protective carry case and MMA leads
- Can weld electrodes of up to 4mm
- AVR generator friendly

TECHNICAL DATA

Input Voltage	95-265V - AC 50/60Hz	
	115V	230V
I_{eff} (A)	17.5	11.6
Input Power (kVA)	3.7	5
Current Range (A)	10 - 125	10 - 160
Duty Cycle @ 40°C	125A @ 35%	160A @ 35%
No-Load Voltage (V)	68	
Efficiency (%)	85	
Power Factor	0.99	
Protection/Insulation Class	IP21/F	
Dimensions (LxWxH mm)	365 x 135 x 280	
Weight (Kg)	6.4	

OPTIONAL

MMA Leads
WCS25-3WEL



Shoulder Strap
JSS-01



Site Bag
JSB-01





COMPLETE WITH

MMA lead set

MMA

TIG

PLASMA

MIG

ACCESSORIES



The Jasic Arc 180 PFC model uses PFC technology to provide advantages such as energy saving and a wide input voltage range.

This technologically advanced inverter is extremely user-friendly and offers reliable and consistent arc performance.

The Arc 180 PFC also offers lift TIG functionality making it an ideal choice for maintenance and light fabrication.

High quality tactile rubber finish to mouldings & handle

Includes
MMA Leads

WCS25-3WEL



Supplied in full colour packaging

PRO SERIES ARC 180 PFC Wide Voltage



ORDER CODE
JA-180PFC

KEY FEATURES

- IGBT inverter technology
- Wide input voltage 95-265V
- Anti-stick, Arc-force, Hot start, Lift TIG
- 33Khz inverter frequency, high-efficiency
- Compact size, lightweight and modern design
- Heavy duty 35-50mm dinse sockets
- Easy arc starting, minimal spatter
- Auto-compensation for voltage fluctuation
- High quality tactile rubber finish to mouldings and handle
- Supplied in full colour packaging
- Can weld electrodes of up to 4mm
- AVR generator friendly

TECHNICAL DATA

Input Voltage	95-265V - AC 50/60Hz	
	115V	230V
I_{eff} (A)	15.2	13.4
Input Power (kVA)	3.2	5.83
Current Range (A)	10 - 110	10 - 180
Duty Cycle @ 40°C	110A @ 35%	180A @ 35%
No-Load Voltage (V)	68	
Efficiency (%)	85	
Power Factor	0.998	
Protection/Insulation Class	IP21S/F	
Dimensions (LxWxH mm)	365 x 135 x 280	
Weight (Kg)	6.4	

OPTIONAL

Shoulder Strap
JSS-01



Site Bag
JSB-01





COMPLETE WITH

Protective case & MMA lead set

MMA

The Jasic Power Arc 180 SE welding inverter is equipped with the latest IGBT technology and a singular PCB for improved efficiency and maintenance.

This technologically advanced inverter is equipped with self-adaptive arc force and offers easy starting with minimal spatter.

TIG

The Arc 180 SE also offers lift TIG functionality making it an ideal choice for maintenance and light fabrication.

PLASMA

Includes Case and Lead Set

MIG

Durable, compact inverter with distinctive design

ACCESSORIES

High quality tactile rubber finish to mouldings & handle





ORDER CODE
JPA-180

KEY FEATURES

- IGBT inverter technology for the professional user
- MMA/DC Lift TIG
- Anti-stick, Arc-force, Hot start, Lift TIG
- 40Khz inverter frequency, high-efficiency
- Compact size, lightweight and modern design
- Heavy duty 35-50mm dinse sockets
- Easy arc starting, minimal spatter
- Stable and reliable arc
- Auto-compensation for voltage fluctuation
- High quality tactile rubber finish to mouldings and handle
- Includes protective carry case and MMA leads
- Can weld electrodes of up to 4mm
- AVR generator friendly

TECHNICAL DATA

Input Voltage	AC 230V - 50/60 Hz
I _{eff} (A)	21.3
Input Power (kVA)	8.3
Current Range (A)	10 - 180
Duty Cycle @ 40°C	160A @ 35%
No-Load Voltage (V)	63
Efficiency (%)	85
Power Factor	0.7
Protection/Insulation Class	IP21/F
Dimensions (LxWxH mm)	313 x 130 x 250
Weight (Kg)	4.7

OPTIONAL

MMA Leads
WCS25-3WEL



Shoulder Strap
JSS-01



Site Bag
JSB-01





COMPLETE WITH

MMA lead set

MMA

TIG

PLASMA

MIG

ACCESSORIES



The Jasic Arc 200 PFC model uses PFC technology to provide advantages such as energy saving and a wide input voltage range.

This technologically advanced inverter is extremely user-friendly and offers reliable and consistent arc performance.

The Arc 200 PFC also offers lift TIG functionality making it an ideal choice for maintenance and light fabrication.

High quality tactile rubber finish to mouldings & handle

Includes
MMA Leads

WCS25-3WEL



Supplied in full colour packaging

PRO SERIES ARC 200 PFC Wide Voltage



ORDER CODE
JA-200PFC

KEY FEATURES

- IGBT inverter technology
- Wide input voltage 95-265V
- Anti-stick, Hot start, Lift TIG
- Adjustable arc force control
- 33Khz inverter frequency, high-efficiency
- Compact size, lightweight and modern design
- Heavy duty 35-50mm dinse sockets
- Easy arc starting, minimal spatter
- Auto-compensation for voltage fluctuation
- High quality tactile rubber finish to mouldings and handle
- Supplied in full colour packaging
- Can weld electrodes of up to 4mm
- Digital meter
- AVR generator friendly

TECHNICAL DATA

Input Voltage	95-265V - AC 50/60Hz	
	115V	230V
I _{eff} (A)	12.7	13.4
Input Power (kVA)	3.5	7.2
Current Range (A)	10 - 110	10 - 200
Duty Cycle @ 40°C	MMA 110A @ 20% TIG 110A @ 35%	200A @ 25% 200A @ 40%
No-Load Voltage (V)	68	
Efficiency (%)	85	
Power Factor	0.998	
Protection/Insulation Class	IP21S/F	
Dimensions (LxWxH mm)	365 x 135 x 280	
Weight (Kg)	6.4	

OPTIONAL

Shoulder Strap
JSS-01



Site Bag
JSB-01





MMA

TIG

PLASMA

MIG

ACCESSORIES



The Jasic Arc 400 MMA welding inverter is equipped with the latest IGBT technology and digital meters. This technologically advanced inverter is extremely user-friendly and offers reliable and consistent arc performance. The Arc 400 also offers lift TIG functionality making it an ideal choice for industrial applications. The VRD (Voltage Reduction Device) option is an added safety function that reduces the open circuit voltage of the welding power source which is used in the MMA/Stick welding process when welding is not taking place to a safe voltage low voltage (9V). The VRD function does not affect the welding performance of the machine.

Suitable for welding
cellulosic electrodes

High duty output for the most demanding
MMA welding applications



ARC 400 c/w Cellulosic Function



ORDER CODE
JA-402C

KEY FEATURES

- Excellent weld characteristics and suitable for a range of electrodes including cellulosic
- IGBT inverter technology
- Suitable for welding cellulosic electrode
- Digital ammeter
- Anti-stick, Arc-force, Hot start, Lift TIG
- Advanced control technology
- Auto-compensation for voltage fluctuation
- Remote control option
- VRD option
- AVR generator friendly

TECHNICAL DATA

Input Voltage	AC 400V - 50/60 Hz
I _{eff} (A)	19.6
Input Power (kVA)	18.2
Current Range (A)	30 - 400
Duty Cycle @ 40°C	400A @ 60%
No-Load Voltage (V)	79 (9V - VRD)
Efficiency (%)	85
Power Factor	0.95
Protection/Insulation Class	IP21S/F
Dimensions (LxWxH mm)	618 x 330 x 441
Weight (Kg)	20

OPTIONAL

Remote Control
JRC-25





ACCESSORIES

MIG

PLASMA

TIG

MMA

DC TIG



MMA

TIG

PLASMA

MIG

ACCESSORIES



COMPLETE WITH

TIG torch & adaptor, Gas regulator, Work return lead & clamp

MMA

TIG

PLASMA

MIG

ACCESSORIES



The Jasic TIG 180 is equipped with powerful IGBT components and a singular PCB for improved efficiency and maintenance.

This technologically advanced inverter is extremely user-friendly and offers reliable and consistent arc performance.

The TIG 180 with high frequency starting also offers MMA functionality making it an ideal choice for maintenance or manufacturing.



Included

High quality tactile rubber finish to mouldings & handle



Supplied in full colour packaging



ORDER CODE
JT-180

KEY FEATURES

- Single PCB construction, easy for testing and maintenance
- IGBT TIG/MMA inverter technology
- High frequency inverter, high efficiency
- Anti-stick, Arc-force, Hot start 2T/4T
- Down slope and post flow
- Easy start, stable and reliable arc
- Auto-compensation for voltage fluctuation
- Compact size, lightweight and modern design
- Heavy duty 35-50mm dinse sockets
- High quality tactile rubber finish to mouldings and handle
- Supplied in full colour packaging
- AVR generator friendly

TECHNICAL DATA

Input Voltage	AC 230V - 50/60 Hz	
I _{eff} (A)	16.5	
Input Power (kVA)	7.1	
Current Range (A)	TIG 10 - 180	MMA 10 - 160
Duty Cycle @ 40°C	180A @ 35%	160A @ 35%
No-Load Voltage (V)	65	
Efficiency (%)	85	
Power Factor	0.7	
Protection/Insulation Class	IP21/F	
Dimensions (LxWxH mm)	365 x 135 x 277	
Weight (Kg)	5.94	

OPTIONAL

MMA Leads
WCS25-3WEL



Shoulder Strap
JSS-01



Site Bag
JSB-01



Trolley
JIT-01





COMPLETE WITH

TIG torch & adaptor, Gas regulator, Work return lead & clamp

MMA

TIG

PLASMA

MIG

ACCESSORIES



The Jasic TIG 180 dual voltage is equipped with powerful IGBT components and a singular PCB for improved efficiency.

This technologically advanced inverter is extremely user-friendly and offers reliable and consistent arc performance.

The TIG 180 with high frequency starting also offers MMA functionality making it an ideal choice for maintenance or manufacturing.



Included

High quality tactile rubber finish to mouldings & handle



Supplied in full colour packaging



TIG 180 DC Dual Voltage



ORDER CODE
JT-180DV

KEY FEATURES

- Single PCB construction, easy for testing and maintenance
- IGBT TIG/MMA inverter technology
- Dual input voltage
- High frequency inverter, high efficiency
- Anti-stick, Arc-force, Hot start 2T/4T
- Down slope and post flow
- Easy start, stable and reliable arc
- Auto-compensation for voltage fluctuation
- Compact size, lightweight and modern design
- Heavy duty 35-50mm dinse sockets
- High quality tactile rubber finish to mouldings and handle
- Supplied in full colour packaging
- AVR generator friendly

TECHNICAL DATA

Input Voltage	AC 115V/230V - 50/60 Hz	
	115V	230V
leff (A)	18.5	14.2
Input Power (kVA)	4	7
Current Range (A)	TIG 10 - 120	10 - 180
	MMA 10 - 100	10 - 160
Duty Cycle @ 40°C	120A @ 35%	180A @ 40%
No-Load Voltage (V)	65	
Efficiency (%)	85	
Power Factor	0.7	
Protection/Insulation Class	IP21/F	
Dimensions (LxWxH mm)	365 x 135 x 277	
Weight (Kg)	5.94	

OPTIONAL

MMA Leads
WCS25-3WEL



Shoulder Strap
JSS-01



Site Bag
JSB-01



Trolley
JIT-01





COMPLETE WITH

Protective case, MMA leads, TIG torch & adaptor, Gas regulator

MMA

The Jasic Power TIG 180 SE is equipped with powerful IGBT components and a singular PCB for improved efficiency and maintenance.

This technologically advanced inverter is extremely user-friendly and offers reliable and consistent arc performance.

TIG

The TIG 180 SE with high frequency starting also offers MMA functionality making it an ideal choice for maintenance or manufacturing.

PLASMA

MIG

ACCESSORIES

High quality tactile rubber finish to mouldings & handle





ORDER CODE
JPT-180

KEY FEATURES

- Single PCB construction, easy for testing and maintenance
- IGBT TIG/MMA inverter technology
- High frequency inverter, high efficiency
- Anti-stick, Arc-force, Hot start 2T/4T
- Down slope and post flow
- Easy start, stable and reliable arc
- Auto-compensation for voltage fluctuation
- Compact size, lightweight and modern design
- Heavy duty 35-50mm dinse sockets
- High quality tactile rubber finish to mouldings and handle
- Includes inverter case, TIG/MMA leads and gas regulator
- AVR generator friendly

TECHNICAL DATA

Input Voltage	AC 230V - 50/60 Hz	
I _{eff} (A)	16.5	
Input Power (kVA)	7.1	
Current Range (A)	TIG 10 - 180	MMA 10 - 160
Duty Cycle @ 40°C	180A @ 35%	160A @ 35%
No-Load Voltage (V)	65	
Efficiency (%)	85	
Power Factor	0.7	
Protection/Insulation Class	IP21/F	
Dimensions (LxWxH mm)	365 x 135 x 277	
Weight (Kg)	5.94	

OPTIONAL

Shoulder Strap
JSS-01



Site Bag
JSB-01



Trolley
JIT-01





COMPLETE WITH

TIG torch & adaptor, Gas regulator, Work return lead & clamp

MMA

TIG

PLASMA

MIG

ACCESSORIES



The Jasic TIG 200 is equipped with powerful IGBT components and a singular PCB for improved efficiency and maintenance.

This technologically advanced inverter is extremely user-friendly and offers reliable and consistent arc performance.

The TIG 200 with high frequency starting also offers MMA functionality making it an ideal choice for maintenance or manufacturing.



Included

High quality tactile rubber finish to mouldings & handle



Supplied in full colour packaging



ORDER CODE
JT-200

KEY FEATURES

- Single PCB construction, easy for testing and maintenance
- IGBT TIG/MMA inverter technology
- High frequency inverter, high efficiency
- Anti-stick, Arc-force, Hot start 2T/4T
- Down slope and post flow
- Easy start, stable and reliable arc
- Auto-compensation for voltage fluctuation
- Compact size, lightweight and modern design
- Heavy duty 35-50mm dinse sockets
- High quality tactile rubber finish to mouldings and handle
- Supplied in full colour packaging
- AVR generator friendly

TECHNICAL DATA

Input Voltage	AC 230V - 50/60 Hz	
I _{eff} (A)	18.9	
Input Power (kVA)	8.2	
Current Range (A)	TIG 10 - 200	MMA 10 - 180
Duty Cycle @ 40°C	200A @ 35%	
No-Load Voltage (V)	65	
Efficiency (%)	85	
Power Factor	0.7	
Protection/Insulation Class	IP21S/F	
Dimensions (LxWxH mm)	365 x 135 x 277	
Weight (Kg)	6.12	

OPTIONAL

MMA Leads
WCS25-3WEL



Shoulder Strap
JSS-01



Site Bag
JSB-01



Trolley
JIT-01





COMPLETE WITH

TIG torch & adaptor, Gas regulator, Work return lead & clamp

MMA

TIG

PLASMA

MIG

ACCESSORIES



The Jasic TIG 200 PFC Pulse operates on a wide input voltage range 95-265V and is equipped with powerful IGBT components and a singular PCB for improved efficiency and maintenance.

This technologically advanced inverter is extremely user-friendly and offers reliable and consistent arc performance.

The TIG 200 with high frequency starting also offers MMA functionality making it an ideal choice for maintenance or manufacturing.



Included

High quality tactile rubber finish to mouldings & handle



Supplied in full colour packaging



TIG 200P DC Pulse PFC Wide Voltage



ORDER CODE
JT-200P-PFC

KEY FEATURES

- DC Pulse TIG/MMA
- Wide input voltage 95-265V
- Single PCB construction, easy for testing and maintenance
- PFC energy saving technology
- IGBT inverter technology
- High frequency inverter, high efficiency
- Digital control, HF arc ignition 2T/4T
- Pulse frequency 0.5-200 Hz
- Easy start, stable and reliable arc
- Auto-compensation for voltage fluctuation
- Compact size, lightweight and modern design
- Heavy duty 35-50mm dinse sockets
- High quality tactile rubber finish to mouldings and handle
- Supplied in full colour packaging
- AVR generator friendly

TECHNICAL DATA

Input Voltage	95-265V - AC 50/60Hz	
	115V	230V
I_{eff} (A)	27.7	14.2
Input Power (kVA)	4	6
Current Range (A)	TIG 10 - 160 MMA 10 - 125	10 - 200 10 - 180
Duty Cycle @ 40°C	TIG 160A @ 60% MMA 125A @ 60%	200A @ 30% 180A @ 25%
No-Load Voltage (V)	65	
Efficiency (%)	85	
Pulse Frequency (Hz)	0.5 - 200	
Power Factor	0.99	
Protection/Insulation Class	IP21S/F	
Dimensions (LxWxH mm)	420 x 135 x 277	
Weight (Kg)	7.5	

OPTIONAL

Shoulder Strap
JSS-01



Site Bag
JSB-01



Foot Control Unit
JFC-05



Trolley
JIT-01





COMPLETE WITH

TIG torch & adaptor, Gas regulator, Work return lead & clamp

MMA

TIG

PLASMA

MIG

ACCESSORIES



The Jasic TIG 300 DC Pulse inverter is equipped with industrial grade components and microprocessor control for high accuracy and performance.

This technologically advanced inverter with a digital control panel allows for feature rich options and provides 8 channel automatic storage of the welding parameters. This modular design TIG welding system can be assembled with an optional trolley and water cooler where required.

High quality tactile rubber finish to mouldings & handle



Included

PRO SERIES TIG 300P DC Pulse Digital



ORDER CODE
JT-300P

KEY FEATURES

- TIG DC Pulse with digital control
- Program memory storage
- Microprocessor control of a wide range of functions
- HF and lift TIG
- Remote control interface
- VRD function
- Digital display
- Intelligent fan and cooler control
- Excellent welding characteristics
- Protection system to enhance equipment life
- Water cooled option
- MMA remote capability
- AVR generator friendly

TECHNICAL DATA

Input Voltage	AC 400V +/-15% - 50/60 Hz	
I _{eff} (A)	9.9	
Input Power (kVA)	11	
Current Range (A)	TIG 5 - 300	MMA 20 - 210
Duty Cycle @ 40°C	300A @ 20%	210A @ 50%
No-Load Voltage (V)	60 (11.8V - VRD)	
Efficiency (%)	85	
Protection/Insulation Class	IP23S/F	
Dimensions (LxWxH mm)	566 x 224 x 405	
Weight (Kg)	19.4	

OPTIONAL

Foot Control Unit
JFC-08



Water Cooling Unit
JWC-MWD



Trolley
JTT-MWD



COMPLETE WITH

TIG torch & adaptor, Gas regulator,
Work return lead & clamp, Trolley, Water cooler

MMA

TIG

PLASMA

MIG

ACCESSORIES



The Jasic TIG 300 DC Pulse inverter is equipped with industrial grade components and microprocessor control for high accuracy and performance. This technologically advanced inverter with a digital control panel allows for feature rich options and provides 8 channel automatic storage of the welding parameters.



Included

PRO SERIES TIG 300P DC Pulse Digital



Water
Cooled



ORDER CODE
JT-300P-WC

KEY FEATURES

- TIG DC Pulse with digital control
- Program memory storage
- Microprocessor control of a wide range of functions
- HF and lift TIG
- Remote control interface
- VRD function
- Digital display
- Intelligent fan and cooler control
- Excellent welding characteristics
- Protection system to enhance equipment life
- MMA remote capability
- AVR generator friendly

TECHNICAL DATA

Input Voltage	AC 400V +/-15% - 50/60 Hz	
I _{eff} (A)	9.9	
Input Power (kVA)	11	
Current Range (A)	TIG 5 - 300	MMA 20 - 210
Duty Cycle @ 40°C	300A @ 20%	210A @ 50%
No-Load Voltage (V)	60 (11.8V - VRD)	
Efficiency (%)	85	
Protection/Insulation Class	IP23S/F	
Dimensions (LxWxH mm)	940 x 420 x 1130	
Weight (Kg)	74	

OPTIONAL

Foot Control Unit
JFC-08





COMPLETE WITH

TIG torch & adaptor, Gas regulator,
Work return lead & clamp, Trolley, Water cooler

MMA

TIG

PLASMA

MIG

ACCESSORIES



The Jasic TIG 400 Pulse is equipped with industrial grade IGBT components and an MCU chip for high accuracy and performance. This technologically advanced inverter with a digital panel allows for software upgrades and provides 8 channel automatic storage of the welding parameters.

This modular design TIG welding system includes the trolley and water cooler as standard.

High quality tactile rubber finish to mouldings & handle



Air cooled version
also available
JT-400PA

PRO SERIES TIG 400P DC Pulse



ORDER CODE
JT-400P

KEY FEATURES

- Industrial grade IGBT inverter technology
- DC Pulse TIG/MMA with VRD function option
- MCU chip for high accuracy and consistency
- HF or Lift arc ignition, 2T/4T, spot-time
- Up/down slope, pre/post flow, crater/initial/weld current
- Digital panel with interface for easy software upgrades
- Gas test function in DC TIG mode
- Modular design with trolley and water cooler included
- Automatic 8 channel storage of welding parameters
- On demand fan and water cooling
- MMA remote capability
- AVR generator friendly

TECHNICAL DATA

Input Voltage	AC 400V - 50/60 Hz	
I _{eff} (A)	14	
Input Power (kVA)	18	
Current Range (A)	TIG DC 5 - 400	MMA DC 30 - 400
Duty Cycle @ 40°C	400A @ 50%	
No-Load Voltage (V)	68	
Efficiency (%)	85	
Power Factor	0.96	
Protection/Insulation Class	IP21S/F	
Dimensions (LxWxH mm)	760 x 360 x 585	
Weight (Kg)	90	

OPTIONAL

Foot Control Unit
JFC-07





ACCESSORIES

MIG

PLASMA

TIG

MMA

AC/DC TIG



MMA

TIG

PLASMA

MIG

ACCESSORIES



COMPLETE WITH

TIG torch & adaptor, Gas regulator, Work return lead & clamp

MMA

TIG

PLASMA

MIG

ACCESSORIES



The Jasic TIG 200P AC/DC mini is a technologically advanced single phase inverter power source offering an ultra-portable solution. The innovative and user-friendly control panel offers a digital weld cycle, welding modes and a program memory feature for storing different welding parameters.

The excellent technical characteristics of the 200 AC/DC make it an ideal choice for professionally qualified TIG welders that require precise and reliable performance.

High quality tactile rubber finish to mouldings & handle

The latest innovation in pulse TIG inverter development



Included



TIG 200P AC/DC Pulse Mini Digital



ORDER CODE
JT-200DS

KEY FEATURES

- TIG Pulse AC/DC with digital control
- Digital display
- Program memory storage
- Easy to use, intuitive control panel
- Pre-post flow time, up/down slope
- Pulse adjustment
- Pulse frequency, pulse duty, arc force, cleaning width
- Remote control interface
- AC function for aluminium and aluminium alloys
- Heavy duty 35-50mm dinse sockets
- DC TIG function for carbon steel, copper and non-ferrous metals
- High speed pulse with precise adjustment for ultimate weld bead
- MMA remote capability
- AVR generator friendly

TECHNICAL DATA

Input Voltage	AC 230V - 50/60 Hz	
I _{eff} (A)	16	
Input Power (kVA)	6.9	
Current Range (A)	TIG 5 - 200	MMA 10 - 160
Duty Cycle @ 40°C	200A @ 25%	160A @ 30%
No-Load Voltage (V)	60	
Efficiency (%)	85	
Power Factor	0.7	
Protection/Insulation Class	IP21S/B	
Dimensions (LxWxH mm)	435 x 160 x 340	
Weight (Kg)	9	

OPTIONAL

Foot Control Unit
JFC-05



Trolley
JIT-01





COMPLETE WITH

TIG torch & adaptor, Gas regulator, Work return lead & clamp

MMA

TIG

PLASMA

MIG

ACCESSORIES



The Jasic 202A Pulse AC/DC is a technologically advanced single phase inverter power source suitable for medium production work. The innovative and user friendly analogue control panel allows full control of welding parameters. Optional water cooler and large cylinder trolley available.

The excellent technical characteristics of the 202 AC/DC make it an ideal choice for professionally qualified TIG welders that require precise and reliable performance.

Ultimate operator control and unrivalled weld performance



Included



TIG 200P AC/DC Pulse Analog

NEW



**ORDER CODE
JT-202A**

KEY FEATURES

- TIG Pulse AC/DC with analog control
- Digital display
- Peak current control, 2T/4T
- Pre-post flow time, up/down slope
- Pulse adjustment
- Pulse frequency, pulse duty, arc force, cleaning width
- Remote control interface
- AC function for aluminium and aluminium alloys
- DC TIG function for carbon steel, copper and non-ferrous metals
- Smooth arc and stable welding performance
- Heavy duty 35/50 dinse sockets
- VRD Function
- AVR generator friendly

TECHNICAL DATA

Input Voltage	AC 230V - 50/60 Hz	
I _{eff} (A)	17	
Input Power (kVA)	7.1	
Current Range (A)	TIG 5 - 200	MMA 10 - 160
Duty Cycle @ 40°C	TIG 200A @ 25%	MMA 160A @ 30%
No-Load Voltage (V)	65 (7V VRD)	
Protection/Insulation Class	IP21S/B	
Dimensions (LxWxH mm)	566 x 224 x 405	
Weight (Kg)	15	

OPTIONAL

Foot Control Unit
JFC-08



Water Cooling Unit
JWC-MWD



Trolley
JTT-MWD



COMPLETE WITH

TIG torch & adaptor, Gas regulator, Work return lead & clamp

MMA

TIG

PLASMA

MIG

ACCESSORIES



The Jasic 202D Pulse AC/DC is a technologically advanced single phase inverter power source suitable for medium production work. The innovative and user friendly digital control panel allows full control of welding parameters. Optional water cooler and large cylinder trolley available.

The excellent technical characteristics of the 202 AC/DC make it an ideal choice for professionally qualified TIG welders that require precise and reliable performance.

Ultimate operator control and unrivalled weld performance



Included



TIG 200P AC/DC Pulse Digital

NEW



ORDER CODE
JT-202D

KEY FEATURES

- TIG Pulse AC/DC with digital control
- 43 KHz inverter frequency and strong shock resistance IGBT
- Program memory storage
- Peak current control, 2T/4T
- Pre-post flow time, up/down slope
- Pulse adjustment
- Pulse frequency, pulse duty, arc force, cleaning width
- Remote control interface
- AC function for aluminium and aluminium alloys
- DC TIG function for carbon steel, copper and non-ferrous metals
- Smooth arc and stable welding performance
- Heavy duty 35/50 dinse sockets
- MMA remote capability
- VRD Function
- AVR generator friendly

TECHNICAL DATA

Input Voltage	AC 230V - 50/60 Hz	
I _{eff} (A)	20	
Input Power (kVA)	6.9	
Current Range (A)	TIG 5 - 200	MMA 10 - 160
Duty Cycle @ 40°C	TIG 200A @ 25%	MMA 160A @ 30%
No-Load Voltage (V)	65 (7V VRD)	
Protection/Insulation Class	IP21S/B	
Dimensions (LxWxH mm)	566 x 224 x 405	
Weight (Kg)	15	

OPTIONAL

Foot Control Unit
JFC-08



Water Cooling Unit
JWC-MWD



Trolley
JTT-MWD



COMPLETE WITH

TIG torch & adaptor, Gas regulator, Work return lead & clamp

MMA

TIG

PLASMA

MIG

ACCESSORIES



The Jasic TIG 315 is a digital AC/DC inverter welder with a wide range of functions, high performance and advanced technology. This multi-function welder with ACTIG welding (square wave, triangular wave and sine wave), AC pulsed TIG welding, DCTIG welding, DC pulsed TIG welding, AC-DC hybrid TIG welding and coated electrode MMA welding (DC, AC).

It can be used in a wide range of welding operations with various types of materials.

The excellent welding performance and function rich technology make it a great choice for the professional welder with high quality demands.





TIG 315P AC/DC Pulse Multi Wave Digital



ORDER CODE
JT-315MWD

KEY FEATURES

- TIG AC/DC Pulse with digital control
- Program memory storage up to 50 sets of data
- Microprocessor control of a wide range of functions
- Multi wave options on AC
- AC/DC TIG hybrid feature
- Variable AC frequency
- HF and lift TIG
- Remote control interface
- VRD function
- Digital display
- Intelligent fan and cooler control
- Excellent welding characteristics
- MMA remote capability
- AVR generator friendly

TECHNICAL DATA

Input Voltage	AC 400V +/-15% - 50/60 Hz	
I _{eff} (A)	12.4	
Input Power (kVA)	14	
Current Range (A)	TIG	MMA
	10 - 315	10 - 270
Duty Cycle @ 40°C	315A @ 30%	270A @ 30%
No-Load Voltage (V)	73 (12.4V - VRD)	
Efficiency (%)	85	
Protection/Insulation Class	IP21S/F	
Dimensions (LxWxH mm)	566 x 224 x 405	
Weight (Kg)	25.5	

OPTIONAL

Foot Control Unit
JFC-08



Water Cooling Unit
JWC-MWD



Trolley
JTT-MWD



COMPLETE WITH

TIG torch & adaptor, Gas regulator,
Work return lead & clamp, Trolley, Water cooler

MMA

TIG

PLASMA

MIG

ACCESSORIES



The Jasic TIG 315 is a digital AC/DC inverter welder with a wide range of functions, high performance and advanced technology. This multi-function welder with ACTIG welding (square wave, triangular wave and sine wave), AC pulsed TIG welding, DC TIG welding, DC pulsed TIG welding, AC-DC hybrid TIG welding and coated electrode MMA welding (DC, AC).

It can be used in a wide range of welding operations with various types of materials.

The excellent welding performance and function rich technology make it a great choice for the professional welder with high quality demands.



Included



TIG 315P AC/DC Pulse Multi Wave Digital



Water
Cooled



ORDER CODE
JT-315MWD-WC

KEY FEATURES

- TIG AC/DC Pulse with digital control
- Program memory storage up to 50 sets of data
- Microprocessor control of a wide range of functions
- Multi wave options on AC
- AC/DC TIG hybrid feature
- Variable AC frequency
- HF and lift TIG
- Remote control interface
- VRD function
- Digital display
- Intelligent fan and cooler control
- Excellent welding characteristics
- AVR generator friendly

TECHNICAL DATA

Input Voltage	AC 400V +/-15% - 50/60 Hz	
I _{eff} (A)	12.4	
Input Power (kVA)	14	
Current Range (A)	TIG 10 - 315	MMA 10 - 270
Duty Cycle @ 40°C	315A @ 30%	270A @ 30%
No-Load Voltage (V)	73 (12.4V - VRD)	
Efficiency (%)	85	
Protection/Insulation Class	IP21S/F	
Dimensions (LxWxH mm)	940 x 420 x 1130	
Weight (Kg)	80	

OPTIONAL

Foot Control Unit
JFC-08





COMPLETE WITH

TIG torch & adaptor, Gas regulator,
Work return lead & clamp, Trolley, Water Cooler

MMA

TIG

PLASMA

MIG

ACCESSORIES



The Jasic TIG 500 Pulse AC/DC (water cooled) is a technologically advanced three phase inverter power source is suitable for medium to large production work.

The innovative and user-friendly digital panel allows full control of the welding parameters.

The excellent technical characteristics of the 500 AC/DC make it an ideal choice for professionally qualified TIG welders that require precise and reliable performance.



Included

PRO SERIES TIG 500P AC/DC Pulse



ORDER CODE
JT-500D

KEY FEATURES

- TIG Pulse AC/DC with digital control
- Program memory storage
- Easy to use, intuitive control panel
- Pre-post flow time, up/down slope
- Pulse adjustment
- Pulse frequency, pulse duty, arc force, cleaning width
- Remote control interface
- AC function for aluminium and aluminium alloys
- DC TIG function for carbon steel, copper and non-ferrous metals
- Smooth arc and stable welding performance
- Water cooled
- AVR generator friendly

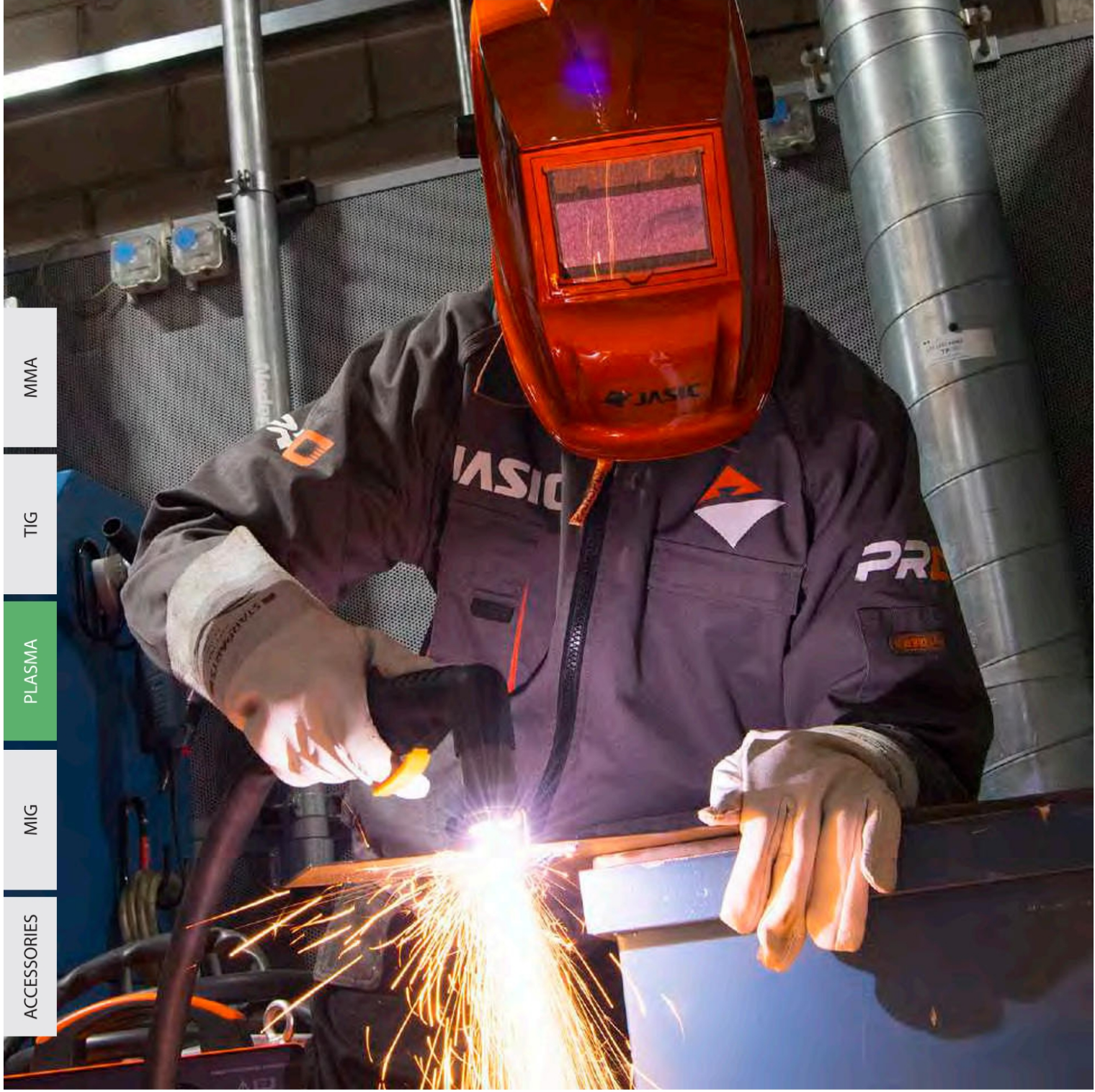
TECHNICAL DATA

Input Voltage	AC 400V - 50/60 Hz	
I _{eff} (A)	23	
Input Power (kVA)	21.5	
Current Range (A)	TIG 10 - 500	MMA 10 - 400
Duty Cycle @ 40°C	500A @ 60%	
No-Load Voltage (V)	74	
Pulse Frequency (Hz)	AC 70	DC 200
Protection/Insulation Class	IP21S/F	
Dimensions (LxWxH mm)	1080 x 510 x 1180	
Weight (Kg)	128	

OPTIONAL

Foot Control Unit
JFC-06





ACCESSORIES

MIG

PLASMA

TIG

MMA

PLASMA CUTTING



MMA

TIG

PLASMA

MIG

ACCESSORIES



COMPLETE WITH

PT60 6m Plasma torch, work return lead & clamp

MMA

TIG

PLASMA

MIG

ACCESSORIES



The Jasic Cut 45P air plasma cutter equipped with PWV technology and high powered IGBT components is the perfect solution for cutting low carbon steel, stainless steel and aluminium.

This user-friendly and highly portable inverter offers smooth, fast and precise cutting on material up to 15mm (steel) and a maximum of 20mm, where a severance cut is required.

Another outstanding feature of this high specification model is PFC (power factor correction) that provides substantial energy saving benefits for the user.



Ask about our compressed air packages & cutting tables

PRO SERIES Plasma Cut 45 PFC Wide Voltage



ORDER CODE
JP-45PWV

KEY FEATURES

- IGBT plasma cutting inverter
- Wide voltage inverter 95-265V
- Lightweight, portable modern design
- Variable cutting control
- Soft touch LED control display
- Smooth precise cutting
- PFC energy saving inverter
- Clean dry air requirement (170 Ltr/Min @ 4.5 bar)
- Includes PT60 6m plasma torch
- Suitable for automation cutting (optional)
- Non HF ignition
- AVR generator friendly

TECHNICAL DATA

Input Voltage	AC 95-265V - 50/60 Hz	
	115V	230V
I _{eff} (A)	17	13.5
Input Power (kVA)	3.6	5.29
Current Range (A)	20 - 30	20 - 45
Duty Cycle @ 40°C	30A @ 30%	45A @ 35%
Cutting Capacity (Clean)	8mm	15mm
Cutting Capacity (Severance)	10mm	20mm
Efficiency (%)	85	
Power Factor	0.99	
Protection/Insulation Class	IP21S/F	
Compressed Air Requirement	170 Ltr/Min @ 4.5 Bar (65 psi)	
Dimensions (LxWxH mm)	439 x 165 x 328	
Weight (Kg)	9.2	

OPTIONAL

Shoulder Strap
JSS-01



Compressor
JAS3HP-100P





COMPLETE WITH

6m Plasma hand torch with Euro connection,
work return lead & clamp, integrated air regulator

MMA

TIG

PLASMA

MIG

ACCESSORIES



The New Jasic Pro Plasma Cut 60 is a professional high-end cutting inverter equipped with the latest IGBT technology.

This technologically advanced plasma inverter is extremely user-friendly and offers reliable cutting performance.

The machine provides variable cutting control that allows the operator to produce precise smooth cuts.

Suitable for:

Sheet Metal Fabrication, Ducting Work, Repair Maintenance, Fabrication, Hand or Automated Cutting



Ask about our compressed air packages & cutting tables

Professional high-end cutting power source equipped with the latest IGBT technology



ORDER CODE
JP-61

KEY FEATURES

- Latest IGBT plasma cutting inverter
- Lightweight, portable robust design
- Variable cutting control
- 20mm cut on mild steel
- 6 mtr hand torch with Euro connection
- Non HF ignition
- LED display
- Smooth precise cutting
- CNC connection for automation cutting
- Simple operation
- Includes PT100 6m plasma torch
- AVR generator friendly

TECHNICAL DATA

Input Voltage	AC 400V - 50/60 Hz
I _{eff} (A)	9.5
Input Power (kVA)	10.8
Current Range (A)	20 - 60
Duty Cycle @ 40°C	60A @ 40%
Cutting Capacity (Clean)	20 mm
Cutting Capacity (Severance)	25 mm
Efficiency (%)	85
Power Factor	0.9
Protection/Insulation Class	IP21S/F
Compressed Air Requirement	200 Ltr/Min @ 5 Bar (73 psi)
Dimensions (LxWxH mm)	555 x 210 x 415
Weight (Kg)	14.5

OPTIONAL

Compressor
JAS3HP-100P





COMPLETE WITH

6m Plasma hand torch with Euro connection,
work return lead & clamp, integrated air regulator

MMA

TIG

PLASMA

MIG

ACCESSORIES



The New Jasic Pro Plasma Cut 80 is a professional high-end cutting inverter equipped with the latest IGBT technology.

This technologically advanced plasma inverter is extremely user-friendly and offers reliable cutting performance.

The machine provides variable cutting control that allows the operator to produce precise smooth cuts.

Suitable for:

Sheet Metal Fabrication, Ducting Work, Repair Maintenance, Fabrication, Hand or Automated Cutting



Ask about our compressed air packages & cutting tables

Professional high-end cutting power source equipped with the latest IGBT technology



ORDER CODE
JP-81

KEY FEATURES

- Latest IGBT plasma cutting inverter
- Lightweight, portable robust design
- Variable cutting control
- 6 m hand torch with Euro connection
- Non HF ignition
- LED display
- Smooth precise cutting
- CNC connection for automation cutting
- Simple operation
- Includes PT100 6m plasma torch
- AVR generator friendly

TECHNICAL DATA

Input Voltage	AC 400V - 50/60 Hz
I _{eff} (A)	14
Input Power (kVA)	15.8
Current Range (A)	20 - 80
Duty Cycle @ 40°C	80A @ 40%
Cutting Capacity (Clean)	25 mm
Cutting Capacity (Severance)	30 mm
Efficiency (%)	85
Power Factor	0.9
Protection/Insulation Class	IP21S/F
Compressed Air Requirement	200 Ltr/Min @ 5 Bar (73 psi)
Dimensions (LxWxH mm)	555 x 210 x 415
Weight (Kg)	15

OPTIONAL

Compressor
JAS3HP-100P





COMPLETE WITH

6m Plasma hand torch with Euro connection,
work return lead & clamp, integrated air regulator

MMA

TIG

PLASMA

MIG

ACCESSORIES



The Jasic Pro Plasma Cut 100 is a professional high-end cutting inverter equipped with the latest IGBT technology.

This technologically advanced plasma inverter is extremely user-friendly and offers reliable cutting performance.

The machine provides variable cutting control that allows the operator to produce precise smooth cuts.



Ask about our compressed air packages & cutting tables

Professional high-end cutting power source equipped with the latest IGBT technology



ORDER CODE
JP-100

KEY FEATURES

- IGBT plasma cutting inverter
- Lightweight, portable modern design
- Variable cutting control
- HF ignition
- LED display
- Smooth precise cutting
- Simple operation
- Suitable for automated cutting (optional)
- PI50LT 6m hand plasma torch
- AVR generator friendly

TECHNICAL DATA

Input Voltage	AC 400V - 50/60 Hz
I _{eff} (A)	17
Input Power (kVA)	15.8
Current Range (A)	20 - 100
Duty Cycle @ 40°C	100A @ 40%
Cutting Capacity (Clean)	30 mm
Cutting Capacity (Severance)	35 mm
Efficiency (%)	90
Power Factor	0.93
Protection/Insulation Class	IP21S/F
Compressed Air Requirement	220 Ltr/Min @ 5 Bar (73 psi)
Dimensions (LxWxH mm)	565 x 255 x 440
Weight (Kg)	26.5

OPTIONAL

Compressor
JAS3HPXX-200S





COMPLETE WITH

6m Plasma hand torch with Euro connection,
work return lead & clamp, integrated air regulator,
Wheel kit

MMA

TIG

PLASMA

MIG

ACCESSORIES



The Jasic Pro Plasma Cut 160 is a professional high-end cutting inverter equipped with the latest IGBT technology.

This technologically advanced plasma inverter is extremely user-friendly and offers consistently reliable cutting performance.

The machine provides variable cutting control that allows the operator to produce precise smooth cuts.



Ask about our compressed air packages & cutting tables

Professional high-end cutting power source equipped with the latest IGBT technology



Plasma Cut 160



ORDER CODE
JP-160

KEY FEATURES

- IGBT plasma cutting inverter
- Wheel mounted, easy to manoeuvre
- Variable cutting control
- HF ignition
- LED display
- Smooth precise cutting
- Simple operation
- In-built pressure regulator
- Suitable for automated cutting (optional)
- PI50LT 6m hand plasma torch
- AVR generator friendly

TECHNICAL DATA

Input Voltage	AC 400V - 50/60 Hz
I _{eff} (A)	48
Input Power (kVA)	43
Current Range (A)	30 - 160
Duty Cycle @ 40°C	160A @ 60%
Cutting Capacity (Clean)	45 mm
Cutting Capacity (Severance)	50 mm
Efficiency (%)	85
Power Factor	0.99
Protection/Insulation Class	IP21S/F
Compressed Air Requirement	220 Ltr/Min @ 5 Bar (73 psi)
Dimensions (LxWxH mm)	676 x 333 x 712
Weight (Kg)	55

OPTIONAL

Compressor
JAS3HPXX-200S





ACCESSORIES

MIG

PLASMA

TIG

MMA

MIG



ACCESSORIES

MIG

PLASMA

TIG

MMA



COMPLETE WITH

MIG torch, Gas regulator, Work return lead & clamp

MMA

TIG

PLASMA

MIG

ACCESSORIES



The Jasic MIG 160 Compact is equipped with powerful IGBT components, multi process capabilities and a singular PCB for improved efficiency and maintenance.

This compact and portable inverter offers excellent welding characteristics and consistently reliable performance for both MIG/MAG and MMA welding processes.



The latest IGBT compact MIG/MMA Inverter, ideally suited for production, site work and maintenance



Supplied in full colour packaging



MIG 160 Multi Process



ORDER CODE
JM-160C

KEY FEATURES

- IGBT MIG/MMA multi process
- Single PCB compact welding inverter
- Stable arc and reliable performance
- Easy arc starting, less spatter, stable current and excellent weld bead shaping
- Suitable for 0.6, 0.8 and 1.0mm welding wire
- Compact size, lightweight and modern design
- Burn back control
- Ideal for production, site work & maintenance
- Can weld electrodes of up to 4mm
- AVR generator friendly

TECHNICAL DATA

Input Voltage	AC 230V - 50/60 Hz
I _{eff} (A)	15.2
Input Power (kVA)	5.9
Voltage Adjustment Range (V)	11 - 26
Current Range (A)	30 - 160
Duty Cycle @ 40°C	160A @ 35%
No-Load Voltage (V)	53
Wire Spool Size	∅ 200mm
Efficiency (%)	85
Power Factor	0.7
Protection/Insulation Class	IP21S/F
Dimensions (LxWxH mm)	485 x 185 x 370
Weight (Kg)	12.5

OPTIONAL

MMA Leads
WCS25-3WEL



Shoulder Strap
JSS-01



Trolley
JIT-01





COMPLETE WITH

MIG torch, Gas regulator, Work return lead & clamp

MMA

TIG

PLASMA

MIG

ACCESSORIES



The Jasic MIG 200 Compact is equipped with powerful IGBT components, multi process capabilities and a singular PCB for improved efficiency and maintenance.

This compact and portable inverter offers excellent welding characteristics and consistently reliable performance for both MIG/MAG and MMA welding processes.



The latest IGBT compact MIG/MMA Inverter, ideally suited for production, site work and maintenance



Supplied in full colour packaging



MIG 200 Multi Process



ORDER CODE
JM-200C

KEY FEATURES

- IGBT MIG/MMA multi process
- Single PCB compact welding inverter
- Stable arc and reliable performance
- Easy arc starting, less spatter, stable current and excellent weld bead shaping
- Suitable for 0.6, 0.8 and 1.0mm welding wire
- Compact size, lightweight and modern design
- Burn back control
- Ideal for production, site work & maintenance
- Can weld electrodes of up to 4mm
- AVR generator friendly

TECHNICAL DATA

Input Voltage	AC 230V - 50/60 Hz
I _{eff} (A)	21
Input Power (kVA)	8
Voltage Adjustment Range (V)	11 - 28
Current Range (A)	30 - 200
Duty Cycle @ 40°C	200A @ 35%
No-Load Voltage (V)	53
Wire Spool Size	∅ 200mm
Efficiency (%)	85
Power Factor	0.7
Protection/Insulation Class	IP21S/F
Dimensions (LxWxH mm)	485 x 185 x 370
Weight (Kg)	12.8

OPTIONAL

MMA Leads
WCS25-3WEL



Shoulder Strap
JSS-01



Trolley
JIT-01





COMPLETE WITH

MIG torch, Gas regulator, Work return lead & clamp

MMA

TIG

PLASMA

MIG

ACCESSORIES



The Jasic MIG 200 Synergic Compact is equipped with powerful IGBT components, multi process capabilities, digital meters and a singular PCB for improved efficiency and maintenance.

This compact and portable synergic inverter offers excellent welding characteristics and consistently reliable performance for both MIG/MAG, MMA and Lift TIG welding processes.

Stable arc and reliable performance ideal for production, site work & maintenance.



Experience high quality weld performance and versatility



Supplied in full colour packaging



MIG 200 Synergic Multi Process



ORDER CODE
JM-200CS

KEY FEATURES

- Advanced synergic control (pulse parameters are selected automatically)
- IGBT MIG/MAG/MMA/Lift TIG multi process
- Self-adaptive crater filling function
- Digital amp & voltmeter
- Working frequency is beyond the audio range, greatly reducing noise pollution
- Easy arc starting, less spatter, stable current and excellent weld bead shaping
- Suitable for 0.6, 0.8 and 1.0mm welding wire
- Compact size, lightweight and modern design
- Burn back control
- Can weld electrodes of up to 4mm
- AVR generator friendly

TECHNICAL DATA

Input Voltage	AC 230V - 50/60 Hz
I _{eff} (A)	21
Input Power (kVA)	9.4
Voltage Adjustment Range (V)	11 - 28
Current Range (A)	10 - 200
Duty Cycle @ 40°C	200A @ 35%
No-Load Voltage (V)	53
Wire Spool Size	∅ 200mm
Efficiency (%)	85
Power Factor	0.7
Protection/Insulation Class	IP21S/F
Dimensions (LxWxH mm)	485 x 185 x 370
Weight (Kg)	12.8

OPTIONAL

MMA Leads
WCS25-3WEL



Shoulder Strap
JSS-01



Trolley
JIT-01





COMPLETE WITH

MIG torch, Gas regulator, Work return lead & clamp

MMA

TIG

PLASMA

MIG

ACCESSORIES



The Jasic MIG 200 PFC Compact operates on a wide input voltage range, 95–265V and is equipped with powerful IGBT components and a singular PCB for improved efficiency and maintenance.

This compact technologically advanced inverter is extremely user-friendly and offers reliable and consistent arc for both MIG/MAG and MMA performance.

Offering a stable arc and reliable performance with the added benefit of being dual voltage makes this machine your perfect partner for site work, maintenance and light fabrication.



Supplied in full colour packaging



MIG 200 Multi Process PFC Wide Voltage



ORDER CODE
JM-200PFC

KEY FEATURES

- IGBT MIG/MMA multi process inverter technology - for the professional user
- Wide input voltage 95-265V
- PFC - Energy saving benefits for the user
- Single PCB compact welding inverter
- Stable arc and reliable performance
- Suitable for 0.6 to 1.0mm wires
- Compact size, lightweight and modern design
- Burn back control
- Ideal for production, site work & maintenance
- Reverse polarity
- Can weld electrodes of up to 4mm
- AVR generator friendly

TECHNICAL DATA

Input Voltage	95-265V - AC 50/60Hz	
	115V	230V
I_{eff} (A)	20.1	14.8
Input Power (kVA)	4.2	5.8
Voltage Adjustment Range (V)	11 - 28	
Current Range (A)	MIG 30 - 140	30 - 200
	MMA 10 - 140	10 - 180
Duty Cycle @ 40°C	200A @ 35%	
No-Load Voltage (V)	53	
Wire Spool Size	ø 200mm	
Efficiency (%)	85	
Power Factor	0.998	
Protection/Insulation Class	IP21S/F	
Dimensions (LxWxH mm)	485 x 185 x 370	
Weight (Kg)	12.8	

OPTIONAL

MMA Leads
WCS25-3WEL



Shoulder Strap
JSS-01



Trolley
JIT-01





COMPLETE WITH

MIG torch, Gas regulator, Work return lead & clamp

MMA

TIG

PLASMA

MIG

ACCESSORIES



The Jasic MIG 202 Compact is equipped with powerful IGBT components, a digital A/V display and multi process capabilities.

The inverter offers excellent welding characteristics and consistently reliable performance for highly demanding and repetitive weld cycles.

This high quality single phase machine delivers an impressive 200 amps at 35% duty cycle, making the MIG 202 Compact an excellent choice for medium duty fabrication work.

Accommodates full size gas cylinder





MIG 202 Inverter Compact



ORDER CODE
JM-202C

KEY FEATURES

- High performance compact MIG/MAG/MMA inverter
- Advanced control circuitry
- Digital A/V display
- High duty cycle
- Suitable for 0.6, 0.8 and 1.0mm welding wire
- Stable and reliable arc
- Burn back control
- Spool gun interface
- Wire inching feature
- AVR generator friendly

TECHNICAL DATA

Input Voltage	AC 230V - 50/60 Hz	
I _{eff} (A)	24	
Input Power (kVA)	8.8	
Voltage Adjustment Range (V)	15.5 - 24	
Current Range (A)	MIG 30 - 200	MMA 10 - 200
Duty Cycle @ 40°C	200A @ 35%	
No-Load Voltage (V)	52	
Wire Spool Size	ø 300mm	
Efficiency (%)	85	
Power Factor	0.75	
Protection/Insulation Class	IP21S/F	
Dimensions (LxWxH mm)	900 x 450 x 755	
Weight (Kg)	46	

OPTIONAL

MMA Leads

WCS25-3WEL



Spool Gun
JSG-02





COMPLETE WITH

MIG torch, Gas regulator, Work return lead & clamp

MMA

TIG

PLASMA

MIG

ACCESSORIES



The Jasic MIG 252 Compact is equipped with powerful IGBT components, a digital A/V display and multi process capabilities.

The inverter offers excellent welding characteristics and consistently reliable performance for highly demanding and repetitive weld cycles.

This high quality single phase machine delivers an impressive 250 amps at 35% duty cycle, making the MIG 252 Compact an excellent choice for medium duty fabrication work.

Consistently reliable performance for highly demanding and repetitive weld cycles

Accommodates full size gas cylinder





MIG 252 Inverter Compact



ORDER CODE
JM-252C

KEY FEATURES

- High performance compact MIG/MAG/MMA inverter
- Suitable for 0.6, 0.8 and 1.0mm welding wire
- Advanced control circuitry
- Digital A/V display
- High duty cycle
- Stable and reliable arc
- Burn back control
- Spool gun interface
- Wire inching feature
- AVR generator friendly

TECHNICAL DATA

Input Voltage	AC 230V - 50/60 Hz
I _{eff} (A)	28.4
Input Power (kVA)	11
Voltage Adjustment Range (V)	11 - 29
Current Range (A)	30 - 250
Duty Cycle @ 40°C	250A @ 35%
No-Load Voltage (V)	52
Wire Spool Size	∅ 300mm
Efficiency (%)	85
Power Factor	0.75
Protection/Insulation Class	IP21S/F
Dimensions (LxWxH mm)	900 x 450 x 755
Weight (Kg)	48

OPTIONAL

MMA Leads

WCS25-3WEL



Spool Gun
JSG-02





COMPLETE WITH

MIG torch, Gas regulator, Work return lead & clamp

MMA

TIG

PLASMA

MIG

ACCESSORIES



The Jasic MIG 250P is a compact MIG/MAG/MMA power source, the unit is feature rich and has synergic programs pre loaded with optimal parameters for inexperienced welders but with a provision of fine tuning for the experienced welder. The pulsed MIG mode allows for high quality welds with a spatter free finish.

Accommodates full size gas cylinder





MIG 250 Pulse Inverter Compact

NEW



**ORDER CODE
JM-250P**

KEY FEATURES

- Compact modern design, advanced IGBT technology
- Four welding modes include MMA, lift TIG, DC, MIG/MAG
- Functions such as accurate preset current/voltage, 2T/4T operation mode, synergic, gas selection, wire diameter selection, electronic inductance adjustment, and on-demand fan are available
- With synergic MIG, welding parameters can be automatically selected based on wire feed speed or material thickness
- Four roll drive unit
- DC MMA suitable for a wide range of electrodes in MMA
- Easy arc starting, low spatter, stable current which offers good weld bead shape
- Excellent weld characteristics
- Auto compensation for mains voltage fluctuation with automatic protective functions including overcurrent, overload, etc.
- AVR generator friendly

TECHNICAL DATA

Input Voltage	230 +/-15% 1P	
I _{eff} (A)	29.2	
Input Power (kVA)	9.13	
Voltage Adjustment Range (V)	13.5 - 36	
Current Range (A)	40 - 250	
VRD Voltage MMA (V)	15	
Duty Cycle @ 40°C	MIG/TIG 250A @ 40%	MMA 220A @ 40%
No-Load Voltage (V)	75	
Wire Speed (m/min)	1.5 - 16	
Efficiency (%)	82	
Power Factor	0.76	
Protection/Insulation Class	IP21S/F	
Dimensions (LxWxH mm)	895 x 455 x 760	
Weight (Kg)	49.7	

OPTIONAL

MMA Leads

WCS25-3WEL



Spool Gun
TSP-250-P





COMPLETE WITH

MIG torch, Gas regulator, Work return lead & clamp

MMA

TIG

PLASMA

MIG

ACCESSORIES



The Jasic MIG 352 Compact is equipped with powerful IGBT components, a digital A/V display and multi process capabilities.

The inverter offers excellent welding characteristics and consistently reliable performance for highly demanding and repetitive weld cycles.

This high quality three phase machine delivers an impressive 350 amps at 40% duty cycle, making the MIG 352 Compact an excellent choice for medium duty fabrication work.

Consistently reliable performance for highly demanding and repetitive weld cycles

Accommodates full size gas cylinder





MIG 350 Inverter Compact



ORDER CODE
JM-352C

KEY FEATURES

- Multi function compact MIG/MAG/MMA/Lift TIG
- Suitable for 0.8, 1.0 and 1.2mm welding wire
- Stable and reliable arc with minimal spatter
- Suitable for flux cored
- Advanced control circuitry
- Digital A/V display
- 4 roll wire feed drive
- High duty cycle
- Burn back control
- Spool gun interface
- Wire inching feature
- VRD on MMA setting
- AVR generator friendly

TECHNICAL DATA

Input Voltage	AC 400V - 50/60 Hz
I _{eff} (A)	13.7
Input Power (kVA)	15
Voltage Adjustment Range (V)	15 - 38
Current Range (A)	50 - 350
Duty Cycle @ 40°C	350A @ 40%
No-Load Voltage (V)	62 (19V - VRD)
Wire Spool Size	ø 300mm
Efficiency (%)	85
Power Factor	0.93
Protection/Insulation Class	IP21S/F
Dimensions (LxWxH mm)	900 x 450 x 755
Weight (Kg)	52

OPTIONAL

MMA Leads

WCS25-3WEL



Spool Gun
JSG-02





COMPLETE WITH

MIG torch, Trolley, 5m interconnecting cable,
gas regulator, work return lead & clamp

MMA

TIG

PLASMA

MIG

ACCESSORIES



The Jasic MIG 270 Separate is equipped with powerful IGBT components, a digital A/V display and multi process capabilities. The inverter offers excellent welding characteristics and consistently reliable performance for highly demanding and repetitive weld cycles. This high quality 230 volt machine delivers an impressive 270 amps at 30% duty cycle, making it an excellent choice for single phase applications.

Advanced single phase inverter
providing rugged, reliable performance

Accommodates full size gas cylinder
Modern 4 Roll wire feed unit

Storage Box - air cooled model only
Replaced when fitted with optional water cooling unit JWC-05





MIG 270 Multi Process Separate



ORDER CODE
JM-272S

KEY FEATURES

- Single phase IGBT inverter
- High powered 230V machine
- Digital amp & voltmeter
- 4 roll wire feed unit
- High duty cycle - single phase inverter
- Advanced control circuitry
- Suitable for 0.6, 0.8, 1.0 and 1.2mm welding wire
- Burn back control & wire inching
- 2T/4T trigger function
- Power & status LED's
- Gas check function
- Variable inductance
- Inverter trolley takes full size gas bottle
- MIG/MAG/MMA
- AVR generator friendly

TECHNICAL DATA

Input Voltage	AC 230V - 50/60 Hz
I _{eff} (A)	28.9
Input Power (kVA)	12.1
Voltage Adjustment Range (V)	11 - 29
Current Range (A)	30 - 270
Duty Cycle @ 40°C	270A @ 30%
No-Load Voltage (V)	54
Wire Speed (m/min)	0 - 16
Efficiency (%)	85
Power Factor	0.75
Protection/Insulation Class	IP21S/F
Dimensions (LxWxH mm)	1020 x 505 x 1460
Weight (Kg)	101

OPTIONAL

MMA Leads

WCS25-3WEL



Water Cooling Unit

JWC-05





- MMA
- TIG
- PLASMA
- MIG**
- ACCESSORIES



COMPLETE WITH

MIG torch, Trolley, 5m interconnecting cable, gas regulator, work return lead & clamp

The Jasic MIG 350 Separate equipped with powerful IGBT components, digital meters and multi process capabilities offers excellent welding characteristics and rugged, reliable performance.

This high quality three phase inverter delivers an impressive 350 amps at 40% duty cycle, making the MIG 350 an excellent choice for medium to heavy duty industrial manufacturers.

Featuring a unique (welding dynamic characteristic control circuit) in MIG, provides a stable arc, low spatter, excellent weld appearance and high welding efficiency.

Advanced control circuitry and rugged, reliable performance

Accommodates full size gas cylinder
Modern 4 Roll wire feed unit

Storage Box - air cooled model only
Replaced when fitted with optional water cooling unit JWC-05





MIG 350 Multi Process Separate



ORDER CODE
JM-352S

KEY FEATURES

- IGBT MIG/MAG MMA inverter
- Digital amp & voltmeter
- High duty cycle
- 4 roll wire feed unit
- Advanced control circuitry
- Suitable for 0.8, 1.0 and 1.2mm welding wire
- Burn back control & wire inching
- 2T/4T trigger function
- Power & status LED's
- Gas check function
- Variable inductance
- Inverter trolley takes full size gas bottle
- AVR generator friendly

TECHNICAL DATA

Input Voltage	AC 400V - 50/60 Hz	
I _{eff} (A)	13.2	
Input Power (kVA)	15	
Voltage Adjustment Range (V)	15 - 36	
Current Range (A)	MIG 50 - 350	MMA 20 - 350
Duty Cycle @ 40°C	350A @ 40%	
No-Load Voltage (V)	65	
Wire Speed (m/min)	1 - 16	
Efficiency (%)	85	
Power Factor	0.93	
Protection/Insulation Class	IP21S/F	
Dimensions (LxWxH mm)	1020 x 505 x 1460	
Weight (Kg)	104	

OPTIONAL

MMA Leads

WCS25-3WEL



Water Cooling Unit

JWC-05





COMPLETE WITH

MIG torch, Trolley, 5m interconnecting cable, gas regulator, work return lead & clamp

MMA

TIG

PLASMA

MIG

ACCESSORIES



The Jasic MIG 450 Separate equipped with powerful IGBT components, digital meters and multi process capabilities offers excellent welding characteristics and rugged, reliable performance.

This high quality three phase inverter delivers an impressive 400 amps at 100% duty cycle, making the MIG 450 an excellent choice for heavy duty industrial manufacturers.

Featuring a unique (welding dynamic characteristic control circuit) in MIG, provides a stable arc, low spatter, excellent weld appearance and high welding efficiency.

Advanced control circuitry and rugged, reliable performance

Accommodates full size gas cylinder
Modern 4 Roll wire feed unit

Storage Box - air cooled model only
Replaced when fitted with optional water cooling unit JWC-05





MIG 450 Multi Process Separate



ORDER CODE
JM-452S

KEY FEATURES

- IGBT MIG/MAG MMA inverter
- Digital amp & voltmeter
- High duty cycle
- 4 roll wire feed unit
- Advanced control circuitry
- Suitable for 0.8, 1.0, 1.2 and 1.6mm welding wire
- Burn back control & wire inching
- 2T/4T trigger function
- Power & status LED's
- Gas check function
- Variable inductance
- Inverter trolley takes full size gas bottle
- AVR generator friendly

TECHNICAL DATA

Input Voltage	AC 400V - 50/60 Hz	
I_{eff} (A)	27	
Input Power (kVA)	18.7	
Voltage Adjustment Range (V)	15 - 40	
Current Range (A)	MIG 60 - 450	MMA 30 - 400
Duty Cycle @ 40°C	400A @ 100%	
No-Load Voltage (V)	65	
Wire Speed (m/min)	1 - 18	
Efficiency (%)	85	
Power Factor	0.91	
Protection/Insulation Class	IP21S/F	
Dimensions (LxWxH mm)	1020 x 505 x 1460	
Weight (Kg)	108	

OPTIONAL

MMA Leads

WCS25-3WEL



Water Cooling Unit

JWC-05





COMPLETE WITH

MIG torch, Trolley, 5m interconnecting cable, gas regulator, work return lead & clamp, Trolley, Water cooler

MMA

TIG

PLASMA

MIG

ACCESSORIES



The Jasic MIG 350 Pulse is equipped with powerful IGBT components, digital meters and multi process capabilities offers excellent welding characteristics and rugged, reliable performance.

This three phase inverter offers synergic curves for common materials and wires.

The machine also has self-diagnostic protection systems that provides extreme reliability.



DSP digital technology for optimum welding performance

Accommodates full size gas cylinder
Modern 4 Roll wire feed unit





MIG 350 Pulse Multi Process Separate



ORDER CODE
JM-350P

KEY FEATURES

- IGBT multi process inverter
- Synergic, MIG/MAG pulse, double pulse and DC MMA
- DSP digital technology for optimum welding performance
- 4 roll wire feed unit
- Suitable for 0.8, 1.0, 1.2 and 1.6mm welding wire
- Easy parameter settings for the operator
- Synergic curves for common materials & wire diameters
- Self diagnostic system
- Encoder feedback control of wire feed system
- Power & status LED's
- Integrated water cooling system
- Inverter trolley takes full size gas bottle
- AVR generator friendly

TECHNICAL DATA

Input Voltage	AC 400V - 50/60 Hz
I _{eff} (A)	23.6
Input Power (kVA)	21.1
Voltage Adjustment Range (V)	17 - 31.5
Current Range (A)	10 - 350
Duty Cycle @ 40°C	350A @ 60%
No-Load Voltage (V)	70
Wire Speed (m/min)	1 - 18
Efficiency (%)	85
Power Factor	0.85
Protection/Insulation Class	IP21S/F
Dimensions (LxWxH mm)	1020 x 505 x 1390
Weight (Kg)	117

OPTIONAL

MMA Leads

WCS25-3WEL





COMPLETE WITH

MIG torch, Trolley, 5m interconnecting cable, gas regulator, work return lead & clamp, Trolley, Water cooler

MMA

TIG

PLASMA

MIG

ACCESSORIES



The Jasic MIG 500P is a high quality digital MIG/MAG power source. It provides low spatter consistent welding with minimal rework on a wide range of materials. The Jasic MIG 500P provides multi process pulsed MIG, synergic MIG, TIG and MMA options for a wide range of applications.

Accommodates full size gas cylinder
Modern 4 Roll wire feed unit





MIG 500 Pulse Multi Process Separate

NEW

 Water Cooled



ORDER CODE
JM-500P

KEY FEATURES

- IGBT multi process inverter
- Pulsed MIG, MIG/MAG, Lift TIG and DC MMA
- Synergic or standard operating modes
- DSP digital technology for optimum welding performance
- Smart fan and water control
- Job storage system
- 4 roll wire feed unit
- Suitable for 0.8, 1.0, 1.2 and 1.6mm welding wire
- Easy parameter settings for the operator
- Synergic curves for common materials & wire diameters
- Self diagnostic system
- Encoder feedback control of wire feed system
- Power & status LED's
- Inverter trolley takes full size gas bottle
- AVR generator friendly

TECHNICAL DATA

Input Voltage	400 +/- 20% 3P
I _{eff} (A)	28.6
Input Power (kVA)	26.7
Voltage Adjustment Range (V)	10 - 50
Current Range (A)	30 - 500
VRD Voltage MMA (V)	15
Duty Cycle @ 40°C	500A @ 50%
No-Load Voltage (V)	86
Wire Speed (m/min)	1.5 - 23
Efficiency (%)	92
Power Factor	0.9
Protection/Insulation Class	IP23S/F
Dimensions (LxWxH mm)	1080 x 510 x 1180
Weight (Kg)	129

OPTIONAL

MMA Leads

WCS25-3WEL





COMPLETE WITH

MIG torch, Trolley, 5m interconnecting cable, gas regulator, work return lead & clamp, Trolley, Water cooler

MMA

TIG

PLASMA

MIG

ACCESSORIES



The Jasic MIG 500S is a powerful MIG/MAG synergic welding system. It is suitable for use in the most demanding situations and its digital controls and displays make it easy to use.

It has synergic programs for a range of common wires and materials.

Accommodates full size gas cylinder
Modern 4 Roll wire feed unit





MIG 500 Synergic Multi Process Separate



Water Cooled



ORDER CODE
JM-500SYN

KEY FEATURES

- IGBT multi process inverter
- Synergic MIG/MAG, Lift TIG and MMA
- DSP digital technology for optimum welding performance
- 4 roll wire feed unit
- Suitable for 0.8, 1.0, 1.2 and 1.6mm welding wire
- Easy parameter settings for the operator
- Synergic curves for common materials & wire diameters
- Self diagnostic system
- Encoder feedback control of wire feed system
- Power & status LED's
- Integrated water cooling system
- Inverter trolley takes full size gas bottle
- AVR generator friendly

TECHNICAL DATA

Input Voltage	400 +/- 20% 3P	
I _{eff} (A)	28.7	
Input Power (kVA)	24.2	
Voltage Adjustment Range (V)	15.5 - 50	
Current Range (A)	MIG 60 - 500	MMA 30 - 500
VRD Voltage MMA (V)	15	
Duty Cycle @ 40°C	500A @ 50%	
No-Load Voltage (V)	80	
Wire Speed (m/min)	1.5 - 22	
Efficiency (%)	91	
Power Factor	0.92	
Protection/Insulation Class	IP23S/F	
Dimensions (LxWxH mm)	1020 x 505 x 1390	
Weight (Kg)	129	

OPTIONAL

MMA Leads

WCS25-3WEL



MMA



JIT-01



JTT-01



JTT-MWD



JWC-MWD



JH-HDX

TIG



JWC-01 2 Pin Plug



JWC-05 5 Pin Plug



JFC



JSG-02



TSP-250-P

PLASMA

MIG



JRC-25



JSB-01



JSS-01



JAS3HP-100P



JAS3HPXX-200S-3

Supplied with Filter Regulator

ACCESSORIES

Accessories

TROLLEY

JIT-01 for models: JT-180 JPT-180 JT-180DV JT-200
JT-200P-PFC JT-200DS JM-160C JM-200C
JM-200CS JM-200PFC

JTT-01 for model: JT-315D

JTT-MWD for models: JT-202A JT-202D JT-315MWD JT-300P

WATER COOLING UNITS

JWC-MWD for models: JT-202A JT-202D JT-315MWD JT-300P

JWC-01 for model: JT-315D

JWC-05 for models: JM-272S JM-352S JM-452S

FOOT CONTROL UNITS

JFC-01 for models: JT-315D

JFC-05 for models: JT-200P-PFC JT-200DS

JFC-06 for model: JT-500D

JFC-07 for model: JT-400P

JFC-08 for models: JT-202A JT-202D JT-315MWD JT-300P

WIRED REMOTE 25M

JRC-25 for model: JA-402C

SPOOL GUN

JSG-02 for models: JM-202C JM-252C JM-352C

TSP-250-P for model: JM-250P

SITE BAG

JSB-01 for models: JA-140 JA-160PFC JA-180PFC JA-200PFC
JT-180 JT-180DV JT-200 JT-200P-PFC

SHOULDER STRAP

JSS-01 for Models: JA-140 JA-160PFC JA-180PFC JA-200PFC
JT-180 JT-180DV JT-200 JT-200P-PFC JM-160C
JM-200C JM-200CS JM-200PFC JP-45PWV

JASIC AUTO DARKENING HELMET

JH-HDX Jasic Auto Darkening HD Welding/Grinding Helmet
featuring ADF cartridge with True Colour Technology

JASIC COMPRESSORS

JAS3HP-100P 3HP, 100 Litre

JAS3HPXX-200S 3HP, 200 Litre